



Materials used:

Cotman Watercolour paper, Derwent Graphic HB Pencil, masking fluid, paper stump, palette, craft knife, paint brush.

Inktense Pencils: Baked Earth, Sun Yellow, Deep Indigo, Field Green, Tangerine, Sherbet Lemon, Fuchsia, Bark, Leaf Green, Iris Blue, Teal Green and Ink Black.

TIP: Refer back to the completed drawing to help guide you through the steps.



1

Using a Derwent Graphic HB pencil, draw the outline onto your paper. Put in as much detail as possible.



2

Take a paper stump and pick up some masking fluid onto the tip and then apply the masking fluid to your drawing to 'white' out the spines of the feathers, eyes of the feathers and around the head and body of the peacock. Allow this to dry.



3

Make a wash of Baked Earth by shaving the tip of the pencil into a palette using a craft knife and then add water to dissolve the dry colour. You will need a medium strength wash for your background. Wet the whole background area, but not the body of the peacock and wash the colour evenly over the background. Allow this to dry. Now re-wet the same area and put on a second wash to intensify the colour. Once this has dried, remove the masking fluid by using the flat of your finger to gently rub it off, be careful not to damage the paper.

The paper under the masking fluid will be left white.



4

TIP: Use a hair dryer to dry out your drawing if time is tight.

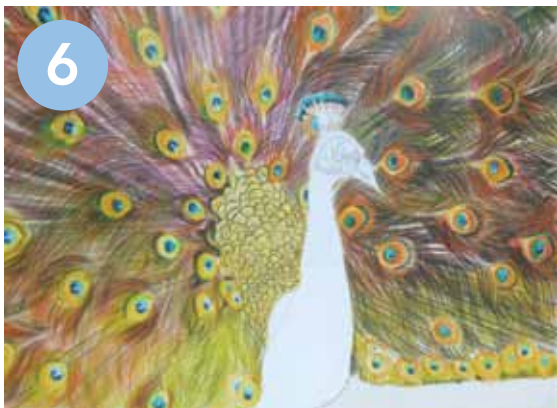
Apply a layer of Sun Yellow to a dry, scrap piece of paper. Then, with a wet brush pick up the Sun Yellow colour and apply this to the eyes of the feathers and base.

Repeat this using Deep Indigo, Field Green, Tangerine and Sherbet Lemon. Picking the colour up with a wet brush, apply Deep Indigo to the centre of the eyes of the feathers; add Field Green around the blue and then Tangerine around the green, Sherbet Lemon around the Tangerine and finishing with another ring of Deep Indigo. Repeat this for the eye of the bird.



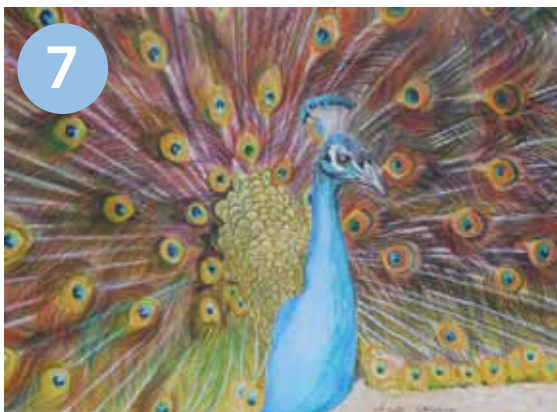
5

Using the pencils dry, colour in all the feather details with Tangerine, Fuchsia, Baked Earth and Bark. Make the right side darker than the left. Brighten the colours by adding a touch of water with your paint brush.



6

Again using the pencil dry at first, outline the detail of the peacock with Leaf Green and intensify the colours with a wet brush. Take colour from the tip of Leaf Green with a wet paint brush and add in some shadows.



7

Wet the whole body of the peacock and, taking colour from the tip of the Iris Blue pencil with your brush, colour in the area. Remember not to put as much colour on the areas where the highlights need to be. Allow this to dry.

Re-wet the area and repeat this process using Teal Green and push the colour up onto the head of the peacock. Add more shadows and the dark marks on the head using Bark. Also add this colour to the eye of the peacock. Use Ink Black dry and draw in the details on the head and beak of the peacock.

Finally, use Baked Earth dry for the texture of the path and then wet with a brush.