

Coloursoft Pencils Step by Step

Penguin on black paper

by Karen Coulson



Materials used:

Derwent Coloursoft Pencils:

Pink, Bright Pink, Prussian Blue, Baby Blue, Grey Green, Mid Green, Lime Green, Lichen Green, Ginger, Peach, Ochre, Dark Terracotta, Dove Grey, Petrel Grey, White.

Derwent Super Point sharpener - optional

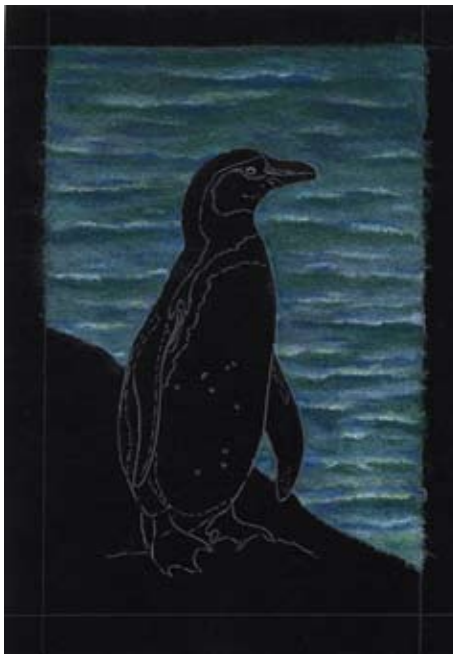
Derwent Blending Pencil - optional

Cartridge paper



1

Transfer the line drawing onto the black paper using White. Add the white highlights into the background water. Put plenty in at this stage as some lines may become lost when the colours are added.



2

For the background water use the following colours; Prussian Blue and Mid Green for the darkest tones, Grey Green and Iced Blue for the mid tones and Baby Blue and White for the lightest tones.

Work your way down the picture using horizontal soft pencil strokes. Put in the two darkest tones immediately under the white highlights added in step one. Gradually introduce the two mid tones followed by the two lightest tones as you work towards the next white line

TIP: Make sure your pencils have a sharp point on them and use them on the side to make softer, wider strokes. Derwent Super Point sharpener is great for giving a long sharp point.

Keep building up layers of all the colours. Try to be irregular with your colour use and length of pencil strokes so you avoid uniform stripes.

A blending pencil may be used to help blend the colours together. Try to keep the top of the picture a little darker, getting lighter/brighter as your waves approach the rock that the penguin is standing on. Finally, add a very small amount of Lime Green to the crests of the waves.

Coloursoft Pencils Step by Step

Penguin on black paper

by Karen Coulson



3

For the rocks use the following colours; Dark Terracotta and Petrel Grey for the darkest tones, Ginger and Ochre for the mid tones and Dove Grey and Peach for the lightest tones.

Moving the pencils in tiny circles apply a layer of Peach followed by a layer of Dove Grey. Small areas of the black paper will still show through at this stage. Add lighter layers of the other colours in the same way and add another layer of Peach to the top edges of the rocks. Use Petrel Grey for the shadows to the left of the penguin's feet and to darken the rocks slightly on the left hand side of the picture. Finally add a small amount of Lime Green to highlight the lightest areas.



4

For the penguins head you will need the following colours; White, Dove Grey, Petrel Grey, Lichen Green, Pink and Bright Pink.

With Lichen Green draw in the eye leaving a black pupil. Draw in the line where the beak opens and the brownish stripe on his beak. Using Pink go around the eye and towards the beak.

With Bright Pink draw in the start of where his beak opens. Use Dark Terracotta to darken his eye colour still leaving the black pupil in the centre.

Using White around the eye and down the beak, lightly mark out all the white areas on the head. Strengthen the White by layering and then use the blender pencil to soften the colours on the beak. Any unwanted original white lines can be covered with Petrel Grey.

Gradually work your way down the penguin marking out all the white areas in a light layer, remembering to leave a few black spots on his stomach.



5

Pressing firmly with the white pencil start to work your way down the bird strengthening all the white areas. Add tiny strokes of White into the black on the top of his chest.

Use Pink for the inside of his right wing and Petrel Grey for the dark speckled texture. Use White to highlight the upper edge of the wing.

Add Dove Grey to soften the join between black and white on his lower left side.

Use Dove Grey for his tail.

For the feet use Pink and Dove Grey and blend the colours together with the blender pencil. Use Petrel Grey for the claws and areas of shadow. Add highlights to the top of each claw with a sharp white pencil.