



Artwork by Daniel Martirosian

**DERWENT**

# TEN TOP TIPS USING CHARCOAL XL BLOCKS & TINTED CHARCOAL XL BLOCKS

### TOP TIPS

- 1 Use the end, corner or side of the XL Blocks to apply more meticulous strokes to your artwork. Make sure the end point of the block is sharpened, where marks need to be finer, especially for detailed features.



- 2 Use either your index finger or middle finger to create a more blurred effect. Blend the charcoal into the paper in a circular motion to give a more 'out of focus' result. Do not apply too much pressure when using this technique as it could damage the drawing.



- 3 When layering the charcoal, wait till the end of the layering process before using the darker XL Blocks. This helps convey a bolder contrast between light and dark in your artwork as the darker blocks have very strong tones that could be overpowering if used prematurely.



- 4 The Derwent Paper Stump is not only useful for blending, but it is also effective for smoothing out very bold strokes from your XL Block for certain features, such as hair. Apply gentle pressure when using the stump so that it does not make a dent on your paper.



- 5 Use the white XL Block to add highlights to specific areas of your drawing, to give a glossy reflection. Make sure the edge of the block is sharp, so that the marks are crisp and precise.

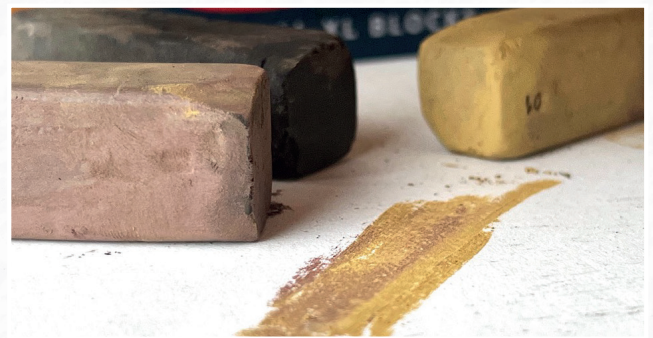


### TOP TIPS

- 6** Use the Derwent Push Button Waterbrush to produce different marks. Lightly push water to the brush and apply it to the XL Block, then paint onto the paper. You can also use the Derwent Spritzer to spray over the charcoal to create intense colours and textures.



- 7** Explore tonal variations by mixing up different colours from your Tinted Charcoal XL Blocks set. Use a blank sheet of paper to mix colours and use your finger or paper stump, to blend and apply colour to the drawing.



- 8** Capture highlights in your artwork, by using the Derwent Battery Operated Eraser. The eraser is extremely helpful when needing to outline very fine features, or correct small areas in your artwork, as it offers tremendous precision and well-handled control.



- 9** Experiment with the Derwent Blender Pen by painting crisp lines in your artwork, applying light pressure to the drawing when using the pen, so that the fine lines do not become too thick.



- 10** Explore the XL Blocks mark making by splitting the block for a sharper point, or using a grater to fragment the block into powder onto the paper. This demonstrates a range of marks that can be achieved with the blocks, adding different effects to your artwork.

