

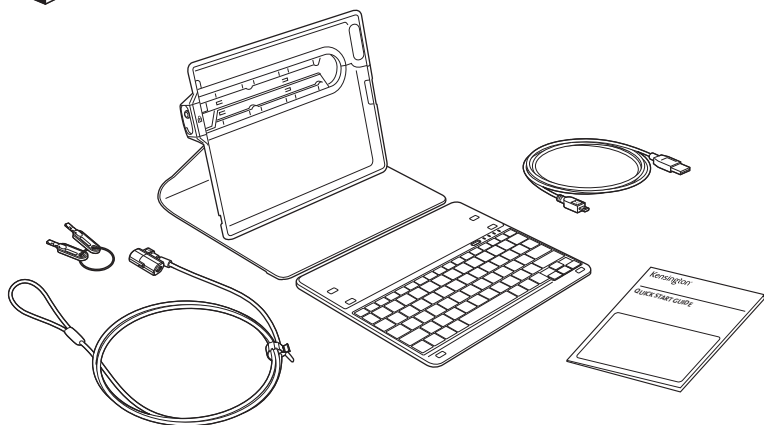
# Kensington®

## KeyFolio™ Secure

### Security Keyboard Case with ClickSafe® Lock

---

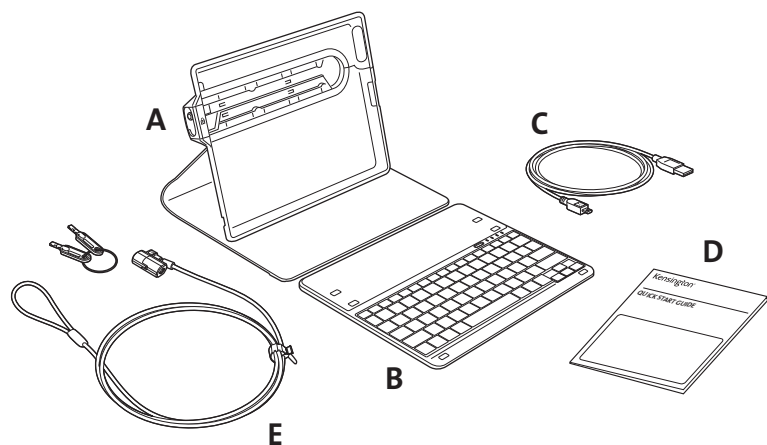
## QUICK START GUIDE



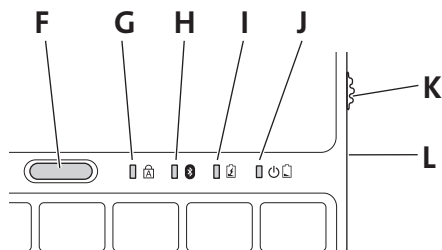
**Register Now!**

[register.kensington.com](https://register.kensington.com)

## Contents



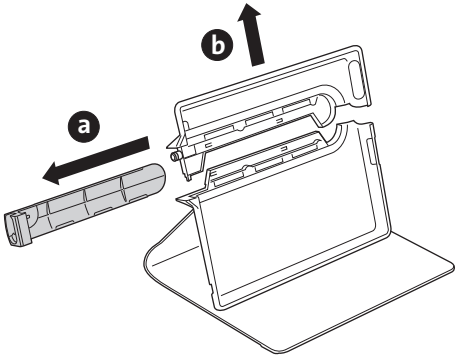
## Components



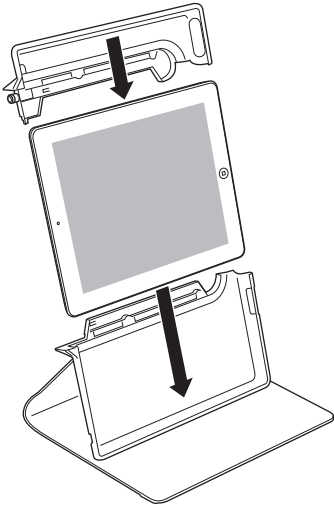
- A KeyFolio and Security Case
- B Removable Bluetooth® Keyboard
- C Charging Cable
- D Quick Start Guide
- E ClickSafe® Keyed Lock
- F Connect Button
- G Caps Lock Indicator Light
- H Bluetooth Status Indicator Light
- I Charging Indicator Light
- J Power/Low Battery Indicator Light
- K On/Off Switch
- L MicroUSB Charging Connector

# Getting Started

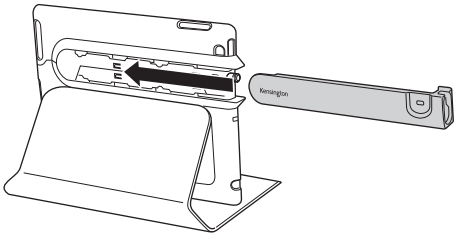
1



2

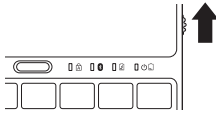


3



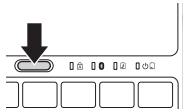
## Connect the Keyboard to Your iPad®

- 1 Turn the **On/Off Switch** on. The **Power Indicator Light** glows.



**NOTE:** When you first turn on the Keyboard, both the **Power/Low Battery Indicator Light** and the **Bluetooth Status Indicator Light** glow for 5 seconds. You cannot connect the Keyboard to your iPad until only the **Power Indicator Light** glows.

- 2 On your iPad, tap **Settings**.
- 3 Open **Bluetooth** and make sure Bluetooth is on.
- 4 On the Keyboard, press the **Connect Button**. The **Bluetooth Status Indicator Light** starts blinking.



- 5 The Keyboard now appears on your iPad screen. Tap **Bluetooth Wireless Keyboard**.
- 6 Your iPad screen displays a passkey. Enter the passkey on the Keyboard, and press **Enter**.
- 7 Your iPad screen shows the Keyboard as Connected. On the Keyboard, the **Bluetooth Status Indicator Light** turns off.
- 8 You can now use your Keyboard to type in any app.

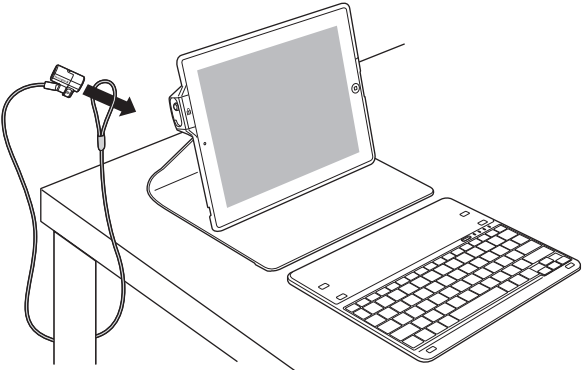
Note the following about the Bluetooth connection between the keyboard and your iPad:

- If the devices are connected and you turn the Keyboard off, the devices are still connected when you turn the Keyboard back on. You can simply begin typing to use the Keyboard.
- Likewise, if the devices are connected and you turn your iPad off, the devices are still connected when you turn your iPad back on. You can simply begin typing to use the Keyboard.
- If the devices are connected and you turn Bluetooth off on your iPad, when you turn Bluetooth back on, the devices are still connected.

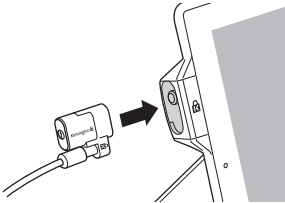
**NOTE:** If the Keyboard sits idle for 15 minutes when it is connected to your iPad, the Keyboard goes into a dormant state, and the **Power Indicator Light** turns off. To wake up the Keyboard, press any key to resume the connection.

# Locking your KeyFolio Secure

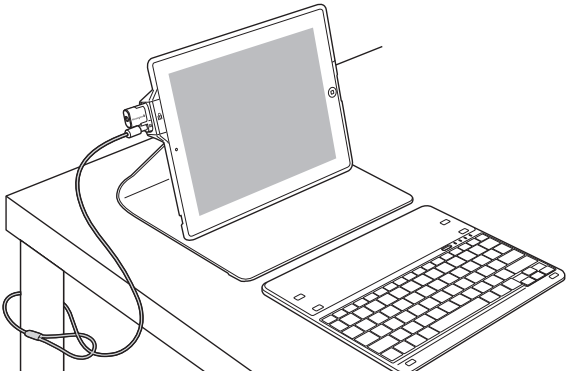
1



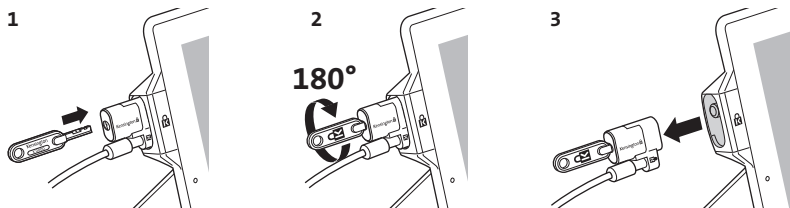
2



3



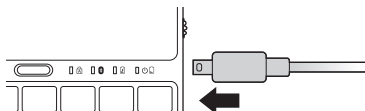
## Unlocking your KeyFolio Secure



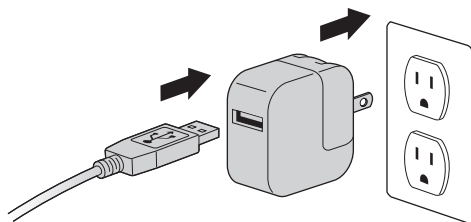
## Charge the Battery

When the **Power/Low Battery Indicator Light** is blinking, you need to charge the Keyboard battery.

- 1 Insert the small end of the **Charging Cable** into the **micro USB Charging Connector** on the Keyboard.



- 2 Insert the other end of the **Charging Cable** into your iPad charger.



- 3 Plug your iPad charger into a working outlet. The **Charging Indicator Light** glows red.
- 4 When the Keyboard is fully charged, the **Charging Indicator Light** turns off.

## Troubleshooting

### *I can't connect the Keyboard to my iPad.*

Try the following in sequence. You can stop when the problem is fixed.

- 1 Make sure you have installed and set up Bluetooth correctly on your iPad. Check the documentation that came with your iPad for instructions.
- 2 Make sure that the Keyboard is within range of your iPad. Maximum Bluetooth range is about 10 meters/33 feet.
- 3 If your iPad is connected to other Bluetooth devices, you may need to disconnect some devices before you can connect to the Keyboard.
- 4 If you changed any Bluetooth settings on your iPad, try connecting the Keyboard to your iPad again.

- 5 Make sure that both your iPad battery and the Keyboard battery are sufficiently charged.

If this does not solve the problem, please contact Kensington Support at **kensington.com**.

## Technical Support

Technical support is available to all registered users of Kensington products. Technical Support contact information can be found on the back page of this manual.

### Web Support

You may find the answer to your problem in the Frequently Asked Questions (FAQ) section of the Support area on the Kensington Website: **www.support.kensington.com**.

### Telephone Support

There is no charge for technical support except long-distance charges where applicable. Please visit **www.kensington.com** for telephone support hours.

U.S. 800-535-4242 or 650-572-2700

Canada 800-268-3447

Please note the following when calling support:

- Call from a phone where you have access to your device.
- Be prepared to provide the following information:
  - Name, address, and telephone number
  - Name of the Kensington product
  - Make and model of your computer
  - System software and version
  - Symptoms of the problem and what led to them

#### WARNING! IMPORTANT SAFETY INSTRUCTIONS


Failure to read and follow these safety instructions could result in fire, explosion, electrical shock or other hazard, causing serious and/or fatal injury and/or property damage.

- Do not modify, disassemble, open, drop, crush, puncture, or shred the KeyFolio.
- The KeyFolio contains a lithium-polymer battery, which is flammable. Keep away from open flame.
- To prevent short circuit or other potential hazards, prevent metal objects such as coins or keys from coming into contact with the KeyFolio, and do not insert foreign objects into the KeyFolio or its ports.
- Keep your KeyFolio dry, and do not use with wet hands. Moisture in or on the KeyFolio may lead to electrical shock. If exposed to moisture during use, unplug the KeyFolio immediately. If your KeyFolio gets wet, have a qualified technician evaluate the product's safety before resuming use.
- Your KeyFolio may become warm during operation. This is normal. However, to prevent overheating, keep area around KeyFolio ventilated and do not place anything on or around KeyFolio during operation. Do not operate your KeyFolio near a heat source, heat vent, or in direct sunlight. Your KeyFolio should be used in temperatures between 50–80°F (10–27°C).
- If the KeyFolio begins to swell or expand, emits a strong odor, or becomes hot to the touch, discontinue use of the KeyFolio, and have the product examined by a qualified electronic technician.
- Inspect your KeyFolio and cables for damage before use. Have any damaged part repaired or replaced before use.
- Your KeyFolio is not user serviceable. Do not attempt to open, modify, or repair.
- If the battery inside the KeyFolio leaks for any reason, discontinue use, and do not allow the KeyFolio's contents to contact your skin or eyes. In the event of accidental contact wash the affected area with large amounts of water and seek medical attention immediately.
- Your KeyFolio is not a toy. Keep them away from children. Insure that all persons who use this product read and follow these warnings and instructions.
- Do not leave the KeyFolio on prolonged charge when not in use.

## Enhancing Performance by Proper Care and Storage of your KeyFolio

- Do not store your KeyFolio either fully charged or discharged. It is best to store your KeyFolio with at least 30 % charge remaining. To check the charge level of your KeyFolio press the battery indicator button.
- Avoid frequent full discharges because this puts additional strain on the battery in the KeyFolio. Charge your KeyFolio between uses even if it is not fully discharged. The lithium-polymer battery used in this product has no "memory effect." Therefore, several partial discharges with frequent recharges are better than one full discharge, and will help prolong the life of your KeyFolio. Short battery life in laptops is mainly caused by heat, rather than charge/discharge patterns.
- Do not store your KeyFolio at elevated temperatures (such as in your car) or in high humidity.

## Disposing of your KeyFolio

- Do not incinerate or dispose of your KeyFolio in a fire or microwave.
- Do not dispose of your KeyFolio as ordinary refuse, as it contains a lithium-polymer battery. Consult your local municipal or civil authority for instructions on correctly disposing of a lithium-polymer battery.
- In the USA and Canada: This mark  indicates your KeyFolio can be recycled by the Rechargeable Battery Recovery Corporation ("RBRC"). When you are ready to dispose of the KeyFolio, please contact the RBRC at 1-800-8-BATTERY or [www.rbrc.org](http://www.rbrc.org).

### INDUSTRY CANADA CONFORMITY

This device has been tested and found to comply with the limits specified in RSS-210. Operation is subject to the following two conditions: (1) This device may not cause interference, and (2) This device must accept any interference, including interference that may cause undesired operation of the device.

### CE DECLARATION OF CONFORMITY

Kensington declares that this product is in compliance with the essential requirements and other relevant provisions of applicable EC directives. For Europe, a copy of the Declaration of Conformity for this product may be obtained by clicking on the Compliance Documentation link at [www.support.kensington.com](http://www.support.kensington.com).

### INFORMATION FOR EU MEMBER-STATES ONLY



The use of the symbol indicates that this product may not be treated as household waste. By ensuring this product is disposed of correctly, you will help prevent potential negative consequences for the environment and human health, which could otherwise be caused by inappropriate waste handling of this product. For more detailed information about recycling of this product, please contact your local city office, your household waste disposal service, or the shop where you purchased the product.

Kensington and the ACCO name and design are registered trademarks of ACCO Brands. The Kensington Promise is a service mark of ACCO Brands. KeyFolio is a registered trade mark of ACCO Brands. ClickSafe is a registered trademark of ACCO Brands Corporation. iPod is a trademark of Apple Inc., registered in the U.S. and other countries. iPhone is a trademark of Apple Inc. "Made for iPod" means that an electronic accessory has been designed to connect specifically to iPod and has been certified by the developer to meet Apple performance standards. "Works with iPhone" means that an electronic accessory has been designed to connect specifically to iPhone and has been certified by the developer to meet Apple performance standards. Apple is not responsible for the operation of this device or its compliance with safety and regulatory standards. All other registered and unregistered trademarks are the property of their respective owners.

© 2012 Kensington Computer Products Group, a division of ACCO Brands USA LLC. Any unauthorized copying, duplicating, or other reproduction of the contents hereof is prohibited without written consent from Kensington Computer Products Group. All rights reserved. 02/12



This product comes with a 2-year limited warranty & free technical support.  
[www.kensington.com](http://www.kensington.com)  
8 0 0 - 2 3 5 - 6 7 0 8



**Kensington Computer Products Group**  
**A Division of ACCO Brands**  
333 Twin Dolphin Drive, Sixth floor  
Redwood Shores, CA 94065

Designed in California, U.S.A.  
by Kensington  
Made in China

**ACCO Australia**  
Level 2, 8 Lord St  
Botany NSW 2019  
Australia

**ACCO Brands Europe**  
Oxford Road  
Aylesbury  
Bucks, HP21 8SZ  
United Kingdom

Patents Pending

[www.kensington.com](http://www.kensington.com)