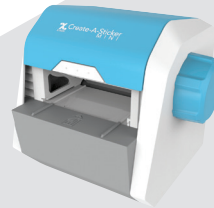




Quartet® *Swingline* GBC X.XYRON® Kensington®



NEW PRODUCTS

2018 CATALOG

ACCO Brands

ACCO Brands has a long history of leadership and innovation in the office products industry. We are focused on delivering exceptional value by providing unique, cutting-edge, branded office products. Our vast offering includes tools that are specifically designed to help you improve productivity, resolve workplace challenges, and stay organized.



As the world's largest provider of whiteboards and bulletin boards, Quartet offers a complete line of innovative products to help employees, students and families stay connected. Our stylish, modular products let customers communicate and collaborate more effectively.



For nearly 95 years, Swingline has been the #1 trusted name in staplers, punches, trimmers and shredders for the home, office and the classroom. The Swingline brand stands for quality, innovation and reliability in office products worldwide.



Swingline, the trusted name in staplers and other fine office products, and GBC, the global leader in binding and laminating, are now joined together to create cutting-edge products that serve the exacting needs of educators, families, and office and print professionals.



Best known for its innovative laminators, GBC has been the world leader in products that help present, protect, secure, organize and enhance printed materials for 70 years. GBC's products help professionals laminate, bind and customize documents with ease.



For the past 35 years, Kensington has been the global brand professionals choose when they need the most innovative and high-quality security solutions, desktop productivity accessories, and ergonomic products.



Xyron develops innovative products that allow end users to be more efficient with their time, supplies and space. Xyron is your go-to destination for adhesive, lamination and creative tools, offering a complete array of high-quality products that appeal to the creative professional, crafter, teacher and mom. With Xyron, professional results and creative expression have never been easier.

Contents

Quartet®

Boards and Mobile Easel 3-5
Quartet Element™ Glass Boards, Glass Dry-Erase Desktop Panel, Total Erase® Whiteboards, Dual-Track Easel and Repositionable Dry-Erase Surface

Swingline®

Staplers and Punches 6-7
Speed Pro™ 45 and Speed Pro™ 25 Electric Stapler Value Packs, Quick Touch™ Stapler Value Packs, Heavy Duty Plier Stapler, Durable Desk Staplers, Optima™ Premium Staples and Precision Pro® Desktop Punches

Shredders 8
Stack-and-Shred™ Auto Feed Shredder with SmarTech™

Swingline® and GBC®

Lamination 9-11
Fusion® Laminators and EZUse™ Pouches, GBC® Pinnacle 27 EZload® and Pinnacle 27 Thermal Roll Laminators and Roll Film, Ultima® 65 Thermal Roll Laminator and Roll Film

Xyron®

Sticker Makers 12
Create-A-Sticker® and Create-A-Sticker MINI™

Kensington®

Ergonomics, Security, Presentation and Accessories 13-15
SmartFit® Sit/Stand Desk, VeriMark™ Fingerprint Key, Security Locks, Privacy Screens, Ultimate Presenter™, SmartSockets® Table Top Surge Protector, International Travel Adapter and BlackBelt™ Rugged Case for iPad® 9.7"

Quartet Element™ Framed Magnetic Glass Dry-Erase Boards

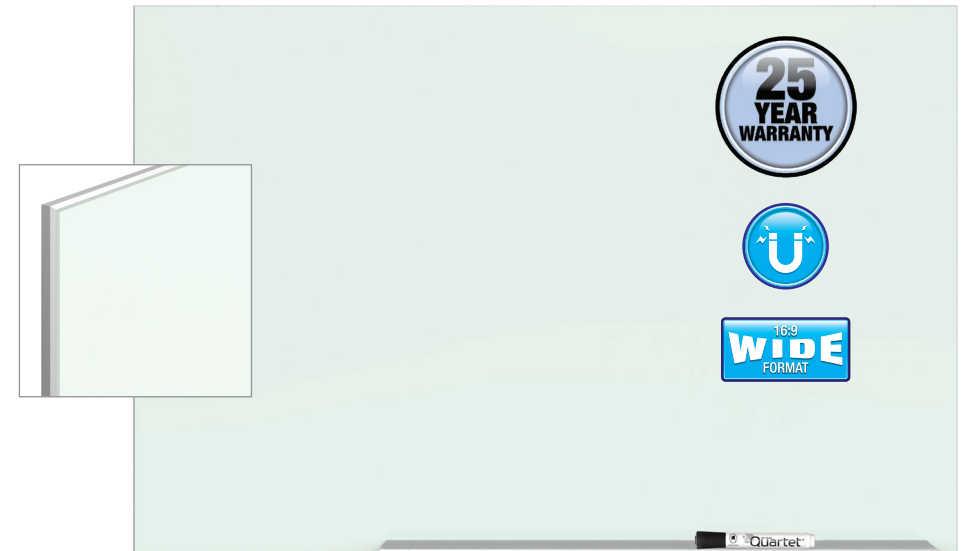


Featuring a white glass surface, the Quartet Element™ Dry-Erase Board meets the needs of a contemporary office. The precisely crafted silver aluminum frame updates the design and ambiance of any corporate environment with a modern vibe.

Quartet Element™ Framed Magnetic Glass Dry-Erase Boards

- Precision engineered silver aluminum frame adds a contemporary edge to enhance the design and ambiance of any office environment
- Tempered glass board is stain and ghost resistant, making it excellent for a heavy use environment that demands superior erasability
- Magnetic surface allows for posting of papers using rare earth magnets
- Wide format board size. The 16:9 aspect ratio maximizes the usable space on the glass surface.
- Mounting hardware with template makes it easy to accurately hang board
- Marker tray keeps accessories handy. 1 dry-erase marker and 2 rare earth magnets are included.
- Limited 25 year warranty

| Aluminum Frame | | | |
|----------------|-----------|-----------|----------|
| G5028E | QRTG5028E | 50" x 28" | \$349.95 |
| G7442E | QRTG7442E | 74" x 42" | \$724.95 |
| G8548E | QRTG8548E | 85" x 48" | \$924.95 |



Desktop Magnetic Glass Dry-Erase Panel

Enhance your personal workspace with this desktop glass dry-erase panel. The self-standing panel makes for an attractive desk partition that enhances privacy, and also serves as a convenient note-taking solution.

Quartet® Desktop Magnetic Glass Dry-Erase Panel

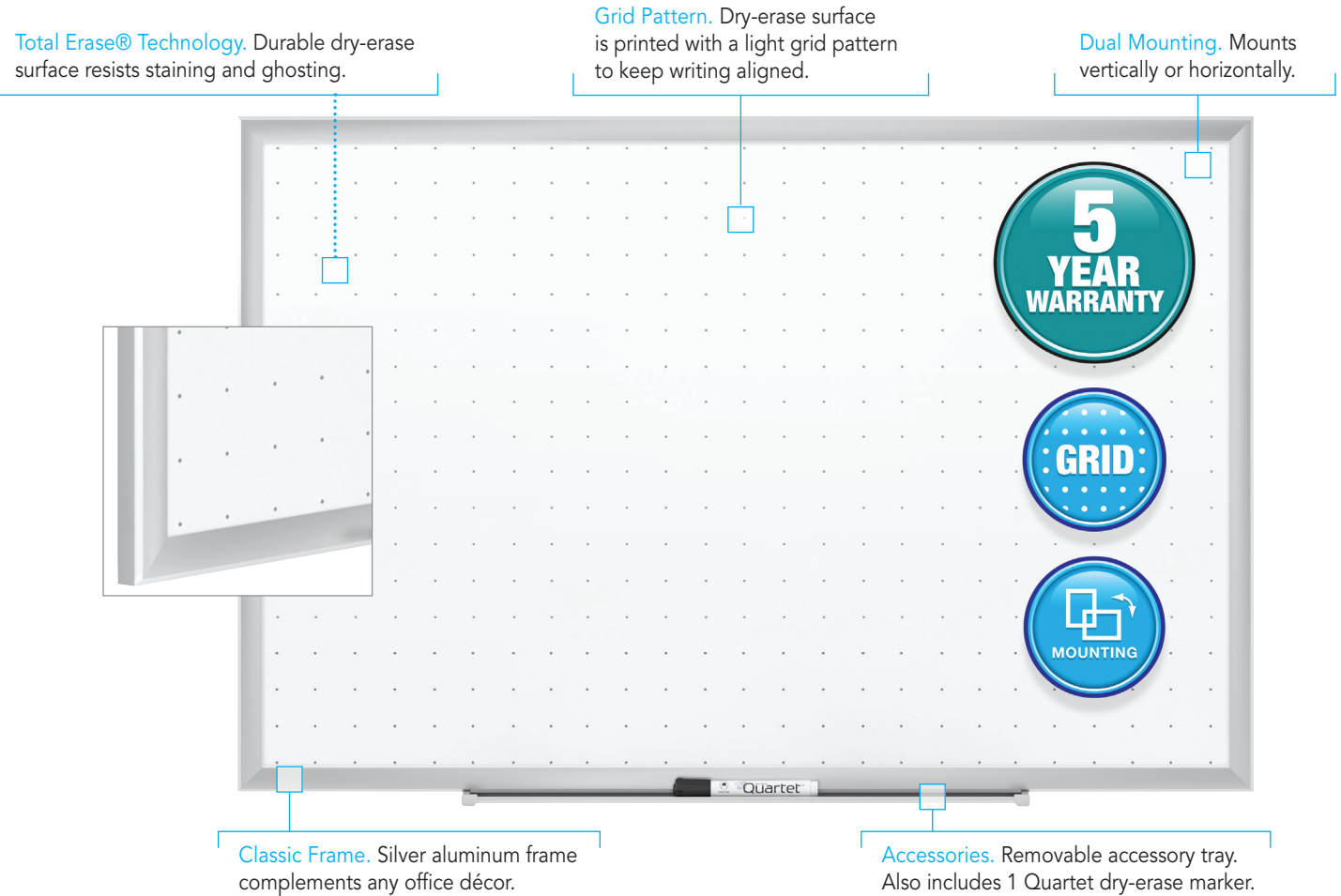
- Desktop panel is self-standing to easily view your notes and ideas
- Tempered glass dry-erase panel is stain and ghost resistant for superior erasability
- Built-in accessory channel provides storage for markers. 1 dry-erase marker and 2 rare earth magnets included.
- Glass dry-erase surface is magnetic. Post papers using rare earth magnets.
- White glass provides a smooth, double-sided writing surface. Write with standard dry-erase markers.
- 17" x 23" size is great for a personal desktop, and can also be used as a desk partition in open workspaces
- No tools required for assembly
- Limited 15 year warranty

| Frameless | | | |
|-----------|-------------|-----------|----------|
| GDP1723W | QRTGDP1723W | 17" x 23" | \$149.99 |



Classic Total Erase® Whiteboards

The durable, Total Erase® whiteboard surface provides exceptional dry-erase performance for lasting use. Paired with a classic aluminum frame, this board will complement almost any space.



Quartet® Classic Total Erase® Whiteboards

- Durable Total Erase® whiteboard surface resists staining and ghosting for easy erasability
- Light grid pattern that is only visible up close helps keep writing aligned for easier readability
- Board size is ideal for small conference rooms or private offices
- Pass-through mounting simplifies installation and can be hung vertically or horizontally
- Mounting hardware, marker tray and 1 dry-erase marker included
- Limited 5 year warranty

| Silver Aluminum Frame | | | |
|-----------------------|-----------|---------|----------|
| STE533 | QRTSTE533 | 3' x 2' | \$73.78 |
| STE534 | QRTSTE534 | 4' x 3' | \$121.43 |
| STE535 | QRTSTE535 | 5' x 3' | \$245.31 |
| STE537 | QRTSTE537 | 6' x 4' | \$312.00 |
| STE538 | QRTSTE538 | 8' x 4' | \$402.52 |

Quartet Motion® Dual-Track Mobile Magnetic Dry-Erase Easel

Dual-track design allows for easy maneuvering between boards and precise positioning that keeps important notes at eye level. The innovative, dual-track with sliding whiteboard panels provides double the dry-erase surface in a compact space.

Quartet Motion® Dual-Track Mobile Magnetic Dry-Erase Easel

- You get a total of 4 writing surfaces on just 2 panels, saving valuable floor space in compact areas
- Two 34" x 40.5" magnetic dry-erase panels double as bulletin boards to provide an ideal space to fasten papers and documents
- Classic aluminum frame matches almost any office décor
- Easel sits on 4 heavy-duty, locking casters for easy and reliable mobility throughout the office
- Accessory trays on both sides provide convenient storage for dry-erase markers and erasers
- Limited 10 year warranty.
- Easel dimensions: 40.5" x 68"

| Aluminum Frame | | | |
|----------------|--------------|-------------|----------|
| ECM4068DT | QRTECM4068DT | 40.5" x 68" | \$649.99 |



Anywhere™ Repositionable Dry-Erase Surface

Create a temporary or long-lasting dry-erase surface in any space. The self-adhesive, dry-erase surface is the perfect solution for capturing your great ideas.

Quartet® Anywhere™ Repositionable Dry-Erase Surface

- Convenient dry-erase surface works like a whiteboard. Write and erase notes with any standard dry-erase marker and eraser.
- Easy to reposition with the self-adhesive backing
- Adhesive won't leave behind sticky residue or damage surfaces
- Easy to transport and can be used on almost any flat surface for last-minute setup
- Dry-erase surface can be cut to fit any space – perfect for walls, windows or desktops
- No tools or assembly required
- Backed by the Quartet Satisfaction Guarantee

| Self-Adhesive Sheets | | | |
|----------------------|-----------|---------|----------|
| R85532 | QRTR85532 | 3' x 2' | \$43.46 |
| R85543 | QRTR85543 | 4' x 3' | \$74.46 |
| R85564 | QRTR85564 | 6' x 4' | \$147.56 |



Staplers



These new staplers are ready to tackle your most demanding jobs. The convenient value packs come with everything you need for seamless daily stapling. And, the Quick Touch™ staplers offer a boost of power when you need to staple more sheets.



Swingline® Speed Pro™ 45 Electric Stapler Value Pack

- Value pack includes Speed Pro™ 45 Electric Stapler, Speed Pro 45 High Capacity Staples and Ultimate Staple Remover
- Fast, simple electric stapling--Speed Pro™ is 3X faster than standard electric staplers. Quick, 1-step stapling process reduces the risk of jams.
- Staples up to 45 sheets at once with Speed Pro™ High Capacity Staples or 25 sheets with Swingline® Premium Staples
- Low staple indicator makes it easy to see when staples run out
- QuickLoad™ front staple magazine quickly ejects with the press of a button. Suction cups on base keep stapler firmly in place during use.
- Included staples easily pierce through papers, reducing the risk of jams. 3/8" leg length for maximum capacity.
- Staples come in strips of 210. Includes 5,000 staples in a reusable box for neat storage.
- Retractable blade style Ultimate Staple Remover features a slim, easy to use design for stress-free staple removing
- Remover's built-in magnet easily picks up discarded staples to keep your workspace clean
- Stapler is black and includes a 7 year warranty. Staple remover is black and comes with a limited 1 year warranty.

| | | | |
|----------|----------|-------|----------|
| S7042141 | SWI42141 | Black | \$182.99 |
|----------|----------|-------|----------|

Swingline® Speed Pro™ 25 Electric Stapler Value Pack

- Value pack includes Speed Pro™ 25 Electric Stapler, S.F.® 4® Premium Staples and Ultimate Staple Remover
- Fast, simple electric stapling--Speed Pro™ is 3X faster than standard electric staplers. Quick, 1-step stapling process reduces the risk of jams.
- Staples up to 25 sheets at once with Swingline® Standard Staples or S.F.® 4® Premium Staples
- Low staple indicator makes it easy to see when staples run out
- QuickLoad™ front staple magazine quickly ejects with the press of a button. Suction cups on base keep stapler firmly in place during use.
- Included staples easily pierce through papers, reducing the risk of jams. Standard 1/4" leg length is ideal for most staple jobs.
- Staples come in strips of 210. Includes 5,000 staples in a reusable box for neat storage.
- Retractable blade style Ultimate Staple Remover features a slim, easy to use design for stress-free staple removing
- Remover's built-in magnet easily picks up discarded staples to keep your workspace clean
- Stapler is black and includes a 7 year warranty. Staple remover is black and comes with a limited 1 year warranty.

| | | | |
|----------|----------|-------|---------|
| S7042140 | SWI42140 | Black | \$99.99 |
|----------|----------|-------|---------|

Swingline® Quick Touch™ Full Strip Stapler Value Pack

- Value pack includes Quick Touch™ Full Strip Stapler, S.F.® 4® Premium Staples and Ultimate Staple Remover
- Reduced effort stapler's stored energy system easily staples up to 28 sheets at a time
- Jam Free Guaranteed when used with Swingline S.F.® 4® Premium Staples.
- Full size stapler holds a full strip of staples.
- QuickLoad™ front staple magazine quickly ejects with the press of a button
- Features a lightweight, ergonomic design with a non-slip base for desktop or handheld use
- Included staples easily pierce through papers, reducing the risk of jams. Standard 1/4" leg length is ideal for most staple jobs.
- Staples come in strips of 210 to fit full size staplers. Includes 5,000 staples in a reusable box for neat storage.
- Retractable blade style Ultimate Staple Remover features a slim, easy to use design for stress-free staple removing
- Remover's built-in magnet easily picks up discarded staples to keep your workspace clean
- Stapler includes a limited 5 year warranty. Staple remover is black and comes with a limited 1 year warranty.

| | | | |
|----------|----------|--------------|---------|
| S7064580 | SWI64580 | Black/Silver | \$39.99 |
| S7064584 | SWI64584 | Blue/Silver | \$39.99 |
| S7064589 | SWI64589 | Red/Silver | \$39.99 |



Staplers, Staples and Punches

Swingline® Heavy Duty Plier Stapler

- Fits snugly in hand; efficient and simple top loading of staples
- 60 sheet staple capacity; requires Optima™ High Capacity Staples
- Durable metal construction
- Integrated safety loop for use with security cable to prevent theft
- Limited lifetime warranty



| | | | |
|----------|----------|-------|---------|
| S7029961 | SWI29961 | Black | \$42.99 |
|----------|----------|-------|---------|

Swingline® Durable Desk Staplers

- Stylish design has a metallic gold base for a chic, professional look
- Contoured design and smooth finish allow for comfortable handling
- Staples up to 20 sheets of paper at a time
- Anvil reverses for pinning function to create temporary staples
- Stapler opens for tacking function to post papers to a soft vertical surface
- Features durable inner metal construction to withstand heavy use
- Limited lifetime warranty



| | | | |
|----------|----------|------------|---------|
| S7064701 | SWI64701 | White/Gold | \$39.99 |
| S7064702 | SWI64702 | Navy/Gold | \$39.99 |
| S7064703 | SWI64703 | Gray/Gold | \$39.99 |

Swingline® Precision Pro® Desktop Punches

- Patented pin technology manually punches precise 9/32" holes
- Adjustable centers let you punch 2 or 3 holes
- Punches up to 10 sheets of paper at a time
- Easy-glide tray catches and holds paper chips for mess-free disposal
- Durable metal construction to withstand heavy use
- Limited 90-day warranty



| | | | |
|----------|----------|------------|---------|
| A7074019 | SWI74019 | Gray/White | \$29.99 |
| A7074086 | SWI74086 | Black/Gold | \$29.99 |
| A7074089 | SWI74089 | Navy/Gold | \$29.99 |

Swingline® Optima™ Premium Staples

- Specially engineered design provides hassle-free stapling
- Standard 1/4" leg length
- 210 staples per strip
- 3,750 staples per box. One pack includes 5 boxes for a total of 18,750 staples.
- Use with Optima® staplers, as well as standard size desktop, grip and electric staplers



| | | | |
|----------|----------|---------------------------|---------|
| S7035565 | SWI35565 | 3,750 Per Box, 5 Box Pack | \$32.96 |
|----------|----------|---------------------------|---------|

Stack-and-Shred™ Auto Feed Shredders with SmarTech™

Save time and money with an auto feed shredder from America's #1 Selling Brand in Auto Feed Shredders. Stack, shut, done and be more productive with your time. Shredder's SmarTech™ technology wirelessly delivers status updates on each job for added peace of mind.



Swingline® Stack-and-Shred™ Auto Feed Shredders with SmarTech™

- Time-saving shredder with SmarTech™ lets you shred faster than ever – just stack, shut and walk away with peace of mind that your job will be completed
- SmarTech™ functionality sends real-time shredding status updates to your phone via the SmarTech Shredder App. Notifications include "Shredding", "Paper Jam", "Job Complete" and more.
- Features easy setup with no IT required; simply download the app from iTunes or the Google Play Store and pair your device
- Administrators can manage multiple shredders at once. Real time status updates indicate if shredders are jammed, bins are full, or oil is low. The app also allows for quick reordering of supplies to simplify maintenance.
- Super cross-cut shred style has added security (Level P-4) for sensitive documents. PIN protected lockable paper chamber keeps documents secure while jobs are in progress.
- 300X shreds up to 300 sheets with automatic shredding and up to 8 sheets at a time during manual feed shredding
- 600X shreds up to 600 sheets with automatic shredding and up to 10 sheets at a time during manual feed shredding
- 750X shreds up to 750 sheets with automatic shredding and up to 12 sheets at a time during manual feed shredding
- Features a large, 11-gallon (300X), 21-gallon (600X) or 31-gallon (750X) pull-out waste bin with bin full indicator and attached wheels for easy mobility
- Ultra quiet (≤60dB) to ensure minimal disruption in the office environment. Continuous duty run time with 750X and 600X lets you shred more paper faster. 300X runs consecutively for 30 minutes on with 30 minutes off to ensure motor's longevity.
- Includes user-friendly, Intelligent features like Auto+ Jam Clearance, Self-Cleaning Cutters and Power Save for virtually effortless shredding
- Auto shreds documents, paper clips and staples; manually shreds credit cards, DVDs and CDs.
- 2 year warranty on machine, 15 year warranty on cutters.



1757577



1757576



| | | | |
|---------|------------|-------------------------------|------------|
| 1757576 | SWI1757576 | 300X, 18.5"L x 13.75"W x 25"H | \$1,249.99 |
| 1757577 | SWI1757577 | 600X, 21"L x 20"W x 32"H | \$2,499.99 |
| 1757578 | SWI1757578 | 750X, 21"L x 20"W x 37.5"H | \$3,999.99 |

Swingline

Fusion® Laminators



Fusion® laminators provide faster-than-ever lamination with a 1-minute warm-up time and superior laminating speed. Perfect for busy office environments, this laminator also has several user-friendly features to maximize productivity and minimize errors.

Swingline® GBC® Fusion® 6000L Laminator



- 6000L warms up in just 1 minute to begin laminating right away
- 47" per minute laminating speed. Laminates up to 40 documents in 10 minutes.
- Advanced Auto Pouch Thickness Detection feature allows laminator to determine and self-adjust to best settings based on the thickness of the item
- Auto jam detection and motorized reverse make it easy to clear lamination errors
- Suitable for use with 3, 5, 7 and 10 mil laminating pouches
- Cold lamination setting included for use with pressure-sensitive pouches
- Laminates documents up to 12" wide and includes accurate feed guides for flawless results
- Touch button interface is user-friendly for easy adjustments. Auto shutoff feature conserves energy.
- 50 EZUse™ Speed Premium Laminating Pouches are included
- 3 year limited warranty

| | | | |
|---------|------------|----------------------|----------|
| 1703097 | SWI1703097 | 12" Laminator, Black | \$389.99 |
|---------|------------|----------------------|----------|

Swingline® GBC® Fusion® 7000L Laminator



- 7000L warms up in just 1 minute to begin laminating right away
- 55" per minute laminating speed. Laminates up to 45 documents in 10 minutes.
- Advanced Auto Pouch Thickness Detection feature allows laminator to determine and self-adjust to best settings based on the thickness of the item
- Auto jam detection and motorized reverse make it easy to clear lamination errors
- Suitable for use with 3, 5, 7 and 10 mil laminating pouches
- Cold lamination setting included for use with pressure-sensitive pouches
- Laminates documents up to 12" wide with 6 rollers to ensure flawless results
- Touch button interface and accurate feed guides are user-friendly for easy adjustments. Laminator includes an auto shutoff feature.
- 50 EZUse™ Speed Premium Laminating Pouches are included
- 3 year limited warranty

| | | | |
|---------|------------|----------------------|----------|
| 1703098 | SWI1703098 | 12" Laminator, Black | \$489.99 |
|---------|------------|----------------------|----------|

Swingline® GBC® EZUse™ Pouches

- Thermal lamination pouch includes visible EZUse™ features that magically disappear after lamination
- Alignment guides make centering documents easy
- Mil icons clearly identify pouch thickness to help you select best laminator settings
- Directional arrows indicate which edge of pouch should be loaded into laminator first
- UV protection prevents fading and discoloration over time
- Letter Speed Format available with seal on the long edge for the fastest lamination
- Multiple sizes, mil thicknesses and pack quantities available



| | | | |
|---------|------------|---------------------------------------|---------|
| 3740721 | SWI3740721 | Standard Letter Size, 3 mil, 150 Pack | \$67.99 |
| 3740722 | SWI3740722 | Speed Letter Size, 3 mil, 150 Pack | \$67.99 |
| 3740723 | SWI3740723 | Standard Letter Size, 5 mil, 150 Pack | \$89.99 |
| 3740724 | SWI3740724 | Speed Letter Size, 5 mil, 150 Pack | \$89.99 |
| 3740725 | SWI3740725 | Standard Letter Size, 3 mil, 200 Pack | \$73.99 |
| 3740726 | SWI3740726 | Speed Letter Size, 3 mil, 200 Pack | \$73.99 |
| 3740727 | SWI3740727 | Standard Letter Size, 5 mil, 200 Pack | \$95.99 |
| 3740728 | SWI3740728 | Speed Letter Size, 5 mil, 200 Pack | \$95.99 |



Pinnacle 27 Roll Laminators

A great laminator for schools, the GBC Pinnacle 27 Thermal Roll Laminators are packed with time-saving, user-friendly features. From its EZload® technology that eliminates film loading mistakes to its visual/audible warm-up alert, built-in trimmer and more, this laminator is an easy choice for busy educators.



GBC® Pinnacle 27 EZload® Thermal Roll Laminator

- Features an 8-10 minute warm-up time with an LED light and audible alert signal to let you know when warm-up is complete
- Laminates at variable speeds up to 10' per minute
- EZload® technology eliminates film loading mistakes with color-coded end caps
- Includes several user-friendly features, like a built-in trimmer, auto reverse, temperature readout and footage counter
- Maximum document width of 27" is perfect for laminating classroom charts, certificates, artwork and more
- Compatible with NAP I and NAP II Gray Cap EZload roll film up to 3 mil thick
- Includes auto standby mode after 2 hours without use and auto shut-off after 3 hours without use
- Limited 1-year warranty
- 42" x 15" x 24 1/2"

| Frameless | | | |
|-----------|--------------|---------------------|-----------|
| 1701720EZ | GBC1701720EZ | NAP I/II, 27" Width | \$3137.09 |

GBC® Pinnacle 27 Gray Cap EZload® Film

- NAP II roll laminating film is clear with glossy finish
- EZload® gray color coded and size specific end caps match laminator saddles to ensure accurate loading
- 1.5 or 3 mil thickness for flexible lamination results
- Use with GBC® Pinnacle 27 EZload® Thermal Roll Laminator with gray saddles only
- 2 rolls per box



| Frameless | | | |
|-----------|--------------|---------------------------|---------|
| 3125311EZ | GBC3125311EZ | 1.5 mil 25" x 500' NAP II | \$56.95 |
| 3125702EZ | GBC3125702EZ | 3.0 mil 25" x 250' NAP II | \$75.95 |

GBC® Pinnacle 27 Thermal Roll Laminator

- Features an 8-10 minute warm-up time with an LED light and audible alert signal to let you know when warm-up is complete
- Laminates at variable speeds up to 10' per minute
- Includes several user-friendly features, like a built-in trimmer, auto reverse, temperature readout and footage counter
- Maximum document width of 27" is perfect for laminating classroom charts, certificates, artwork and more
- Compatible with NAP I and NAP II roll film up to 3 mil thick
- Includes auto standby mode after 2 hours without use and auto shut-off after 3 hours without use
- Limited 1-year warranty
- 42" x 15" x 24 1/2"



| Frameless | | | |
|-----------|------------|---------------------|-----------|
| 1701700 | GBC1701700 | NAP I/II, 27" Width | \$3045.72 |



Roll Laminators



The new Ultima® 65 revolutionizes laminating for educators. Conveniently compatible with both EZload® film and standard film, this laminator uses AutoGrip shafts and an innovative pivoting feed table to make film loading easier than ever before. Included AutoSpeed and other user-friendly features simplify laminating for users, making this laminator the perfect choice for common classroom laminating jobs.



GBC® Ultima® 65 Thermal Roll Laminator

- EZload® technology uses color coded end caps to take the guesswork out of film loading and eliminates the hassle of putting film on complicated film shafts
- Pivoting feed table eliminates the need to remove the table when replacing film, further simplifying the film changing process
- AutoGrip shafts make removing and adding standard film easier than ever
- Maximum document width of 27" is perfect size for laminating classroom charts, certificates, artwork and more. Accepts standard GBC® NAP-Lam® I film or GBC Gray Cap EZload film up to 3 mil thick.
- One-touch AutoSpeed automatically adjusts the laminating speed for you, ensuring quality lamination on every project
- Additional stop button on the back of the laminator allows you to stop the machine while watching the job's output
- Built-in trimmer eliminates the need for scissors and footage counter lets you quickly tell how much of the roll remains to track film usage
- Slow forward and reverse functions work while the machine is open to easily clear jams and ensure worry-free laminating
- Visual ready alert light lets you know when the machine's 10 minute warm-up is complete. Safety features include attached protective shield, auto standby mode after 2 hours without use and auto shutoff after 3 hours without use.
- Laminator comes with a limited 90-day warranty. 21" L x 35"W x 14"H.

| Frameless | | | |
|-----------|------------|-----------|------------|
| 1710740 | GBC1710740 | 27" Width | \$2,877.42 |

GBC® Gray Cap EZload® Roll Film

- EZload film rolls are easy to load with color coded end caps that match the saddles on the Ultima® 65 Laminator to effortlessly tell which way to insert the film
- NAP I laminating thermal roll film has a glossy finish and is perfect for use with all standard laminating jobs
- 25" or 27" roll size is the perfect width for most classroom laminating projects and contains enough film to last through several uses
- 1.5 or 3 mil thickness protects paper while still allowing it to remain flexible
- Gray Cap EZload Film is designed specifically for use with the GBC Ultima 65 Thermal Roll Laminator and the new Pinnacle 27 EZload
- Includes 2 rolls of laminating film per box. Pricing is per roll.

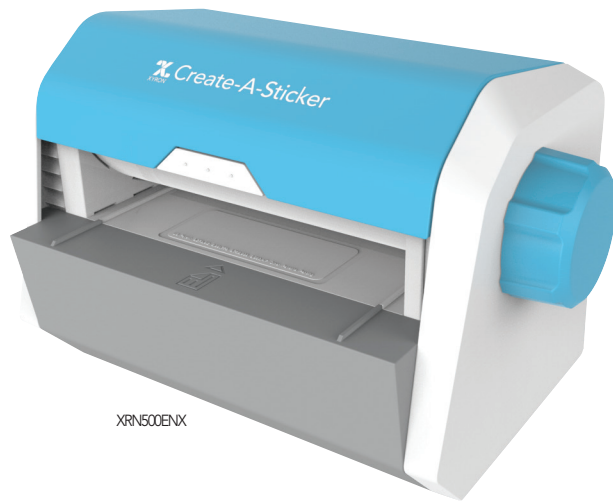
| Frameless | | | |
|-----------|--------------|-------------------------------------|---------|
| 3000004EZ | GBC3000004EZ | NAP I, 1.5 mil, 25" x 500', 2 Rolls | \$49.25 |
| 3126061EZ | GBC3126061EZ | NAP I, 1.5 mil, 27" x 500', 2 Rolls | \$62.00 |
| 3000024EZ | GBC3000024EZ | NAP I, 3 mil, 25" x 250', 2 Rolls | \$70.00 |



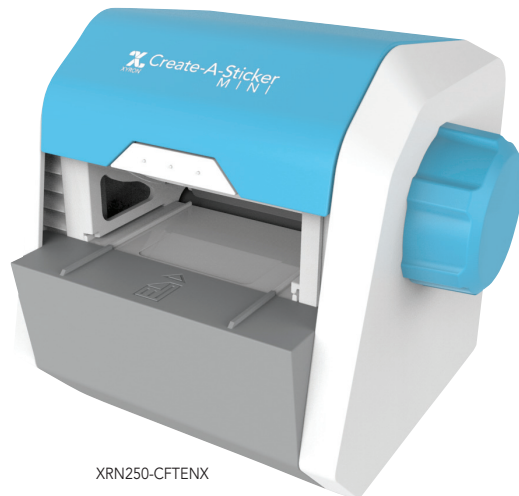
Sticker Makers



Create stickers almost instantly out of any flat item with the Create-A-Sticker® machines. Perfect for home, office or classroom use. Make custom labels, signs, reward stickers and more. The possibilities are endless. The machine comes in two sizes: 5" and 2.5" wide.



XRN500ENX



XRN250-CFTENX



Easy to use!

1. Place item in the Xyron® Create-A-Sticker®
2. Turn the knob
3. Tear, peel and stick



Xyron® Create-A-Sticker®

- Simply place item on the feed tray, turn knob, tear and peel sticker. It's that easy.
- Apply adhesive edge-to-edge for a strong hold
- No messy glue to clean up
- Other cartridges sold separately
- Comes with non-toxic, acid-free, permanent adhesive
- XRN500ENX: Material width: 5" (12.7 cm), Material length: 10' (3.05 m), Dimensions: 8.38" x 9.38" x 6"
- XRN250-CFTENX: Material width: 2.5" (6.4 cm), Material length: 10' (3.05 m), Dimensions: 5.7" x 8" x 7"

| Create-A-Sticker® | | | |
|------------------------|-----------------|---|---------|
| XRN500ENX | XRN500ENX | Xyron® Create-A-Sticker® | \$34.99 |
| AT1505-18 | XRNAT1505-18 | Permanent Adhesive Refill Cartridge, 20' | \$14.99 |
| AT1506-18 | XRNAT1506-18 | Repositionable Adhesive Refill Cartridge, 20' | \$14.99 |
| Create-A-Sticker MINI™ | | | |
| XRN250-CFTENX | XRN250-CFTENX | Xyron® Create-A-Sticker MINI™ | \$29.99 |
| AT255-20CFTP | XRNAT255-20CFTP | Permanent Adhesive Refill Cartridge, 20' | \$11.99 |
| AT256-20CFTR | XRNAT256-20CFTR | Repositionable Adhesive Refill Cartridge, 20' | \$11.99 |



Technology Accessories

Kensington®

Kensington is a leading provider of desktop and mobile device accessories, trusted by IT, educators, business and home office professionals around the world. In both office and mobile environments, our extensive portfolio of award-winning products provides trusted security, desktop productivity innovations, and ergonomic well-being.



Kensington® SmartFit® Sit/Stand Desk


- Fully assembled setup is ready to use out-of-the-box
- Professional two-tier structure provides a 35.4in (900mm) wide main desk surface with plenty of room for a dual monitor setup, documents and other desktop accessories, an integrated keyboard and mouse deck, and ergonomically-designed beveled edges to help reduce contact stress
- SmartFit® System simplifies ideal ergonomic height positioning using scientifically proven research to help prevent injury and increase comfort
- Pneumatic lift with tension adjustment system allows you to easily adjust lift tension based on the workstation's weight load for smooth and effortless adjustment between sitting and standing positions
- Space-saving design allows the workstation to move straight up and down within its own footprint
- 22.8in (580mm) height extension accommodates the needs of taller individuals with a sturdy and stable workstation even when fully extended
- 35lb (15.9kg) weight capacity supports up to 30lbs (13.6kg) on the main desk surface and up to 5lbs (2.3kg) on the keyboard and mouse deck
- Zero-footprint mounting holes allow you to add a VESA-Compatible Mounting Plate (K33959WW) to connect a compatible Kensington docking station (sold separately)
- Cable management system routes monitor and accessory cords to keep workstation tidy and uncluttered



 **SmartFit®** Your personal fit in 3 easy steps
System

 **1) MEASURE:** Place hand on SmartFit chart to determine your color setting

 **2) ADJUST:** Set up the product according to your color setting

 **3) FIT:** Experience the ergonomic comfort of your personalized fit



K52804 KMW52804 Black \$799.99

Kensington®

Kensington® VeriMark™ Fingerprint Key

- Advanced Fingerprint Technology combines superior biometric performance and 360° readability with anti-spoofing protection, while exceeding industry standards for False Rejection Rate (3%) and False Acceptance Rate (0.002%)
- Universal Integration provides scalable, out-of-the-box access for Windows computers and platforms, including biometric login for Windows Hello™
- FIDO U2F Certified to ensure seamless interoperability and meet 2nd-factor security key logon requirements for cloud-based service and software providers, including Google, Dropbox, GitHub and Facebook
- Password Manager Compatibility supports popular tools, like Dashlane, LastPass (Premium), Keeper (Premium) and Roboform, to allow the fingerprint to authenticate and automatically fill in usernames and passwords for websites
- Compact design easily attaches to a standard keyring for convenient portability



| | | |
|--------|----------|---------|
| K67977 | KMW67977 | \$57.45 |
|--------|----------|---------|

Kensington® Privacy Screen for Widescreen Monitors (16:9)

- Limits viewing angle to +/- 30°, hiding personal or confidential information from anyone trying to look from the side
- Reduces harmful blue light by up to 30%
- Can be installed using the included frameless tab holders or double-sided tape
- Anti-reflective coating reduces glare and improves clarity
- Reversible with matte and glossy viewing options
- Protects the monitor screen from scratches and damage
- Cleaning cloth included
- TAA Compliant



| | | | |
|--------|----------|------------------------|----------|
| K60729 | KMW60729 | FP270W9, 27" Monitor | \$149.45 |
| K60730 | KMW60730 | FP236W9, 23.6" Monitor | \$97.95 |
| K60731 | KMW60731 | FP238W9, 23.8" Monitor | \$97.95 |

Kensington® Keyed Cable Lock for Surface Pro

- Exclusively designed for Surface Pro to provide professional-level security and superior device engagement
- Non-invasive locking technology provides easy-to-use security solution that requires no device modifications, preserving the Surface Pro's hardware warranty and aesthetics
- Strong lock head meets Kensington's industry-leading standards for tamper-resistance, reliability and durability
- 5mm keying system includes patented anti-pick Hidden Pin™ Technology, and is part of Kensington's robust key management solutions that include Master Keyed (K62052M) and Supervisor Keyed (K62052S) options to help IT managers minimize the number of keys required to secure devices in mixed technology environments
- Carbon steel cable resists and deters cutting attempts
- Register and Retrieve™ program offers free and secure cloud-based key replacement
- Master Access allows both the user and administrators to unlock or reset locks at any time
- Supervisor Keyed allows lock access only to authorized administrators



| | | | |
|---------|-----------|------------------|---------|
| K62044 | KMW62044 | | \$57.45 |
| K62052M | KMW62052M | Master Keyed | \$57.45 |
| K62052S | KMW62052S | Supervisor Keyed | \$57.45 |

Kensington® Magnetic Privacy Screen for MacBook® Pro

- Integrates seamlessly with your MacBook's screen by attaching to the magnets which are already built in to the MacBook's frame.
- Limits viewing angle to +/- 30°, hiding personal or confidential information from anyone trying to look from the side
- Reduces harmful blue light by up to 22%
- Low reflective coating reduces glare and improves clarity
- Reversible with matte and glossy viewing options
- Protects the monitor screen from scratches and damage
- Cleaning cloth included



| | | | | |
|--------|----------|-----------------------------|-------------------|---------|
| K64490 | KMW64490 | MP13, 13-inch 2016 and 2017 | 16:9 aspect ratio | \$68.95 |
| K64491 | KMW64491 | MP15, 15-inch 2016 and 2017 | 16:9 aspect ratio | \$74.95 |

Kensington® Ultimate Presenter™ with Virtual Pointer

- Wireless presentation remote with laser-free digital pointer will not wash out on TV displays or bright LED screens and is ideal for environments where laser pointers are not feasible
- Virtual pointer technology allows pointer to be viewed on a variety of presentation screens simultaneously including traditional projection screens, TV displays, bright LED screens, and smart boards – ideal for conference rooms and auditoriums with multiple screens
- Online meeting compatibility allows remote participants to see the pointer onscreen when using web meeting tools like WebEx®, GoToMeeting®, Skype™, and join.me®
- KensingtonWorks™ Software enables customization of pointer size, shape and speed to suit your presentation style
- Ergonomist-approved design features a contoured shape to minimize wrist twist and maximize comfort with an intuitive 4-button layout
- 2.4GHz receiver with MicroSD Card provides up to 20 meters (65ft) of wireless range, expandability to 32GB of memory, and a plug and play user experience. For optimal wireless range, plug receiver directly into host presentation device (e.g., laptop, desktop PC). Actual wireless range may vary with users' configuration and environmental conditions.
- Windows® and Mac® compatible to support PowerPoint®, Keynote®, Adobe® PDF and Google® Slides



| | | | |
|--------|----------|-------|----------|
| K75233 | KMW75233 | Black | \$114.95 |
|--------|----------|-------|----------|

Kensington® International Travel Adapter with Dual USB Ports

- 3-pole grounded adapter provides the safest way to charge your devices
- Compatible with grounded and ungrounded plugs for safely and conveniently connecting to power in more than 200 countries
- Higher power output safely supplies up to 1575W to the most popular traveling device companions, including laptops, smartphones and shavers
- Dual 2.4A USB ports provide the fastest charging available for two devices
- Durable compact design makes the adapter an ideal travel companion
- 2 year limited warranty provided by The Professionals' Choice in mobile accessories
- Internal fuse to protect connected devices like laptops from unexpected power surges



| | | | |
|--------|----------|--------------------|---------|
| K38238 | KMW38238 | Grounded (3-Prong) | \$57.45 |
|--------|----------|--------------------|---------|

Kensington® SmartSockets® Table Top Surge Protector with USB

- Hextuple safety protection guards against voltage spikes, current surges, power surges, overheating, and short-circuits, while also providing the highest V0 rating available for fire resistant housing in consumer electronics
- 1500 joules of surge dissipation safeguards computers and other electronic devices
- 6 outlets with ample room to accommodate AC adapters in each
- 4 fast-charging USB ports supply up to 2.4A per port (4.8A shared max across 4 ports)
- 16-foot power cord allows SmartSockets to reach almost anywhere
- Color-coded rings with matching cord labels provide easy cord management
- UL and CSA Certified to provide superior safety and reliability
- \$50,000 connected equipment warranty against damage from surges
- Right-Angle plug easily fits into tight spaces
- Ground and surge protection indicator provides visual assurance that your devices are protected



| | | | |
|--------|----------|-------|---------|
| K64494 | KMW64494 | Black | \$68.95 |
|--------|----------|-------|---------|

Kensington® BlackBelt™ Rugged Case for iPad® 9.7"

- Defensive and rugged enough to resist damage and protect your iPad® 9.7" by meeting the U.S. Department of Defense MIL-STD-810G testing protocols for drop impact
- Infinitely variable kick stand is adaptable and increases comfort by reducing additional strain on the eyes, neck or wrists
- Integrated silicone hand strap provides a worry-free convenient way to collaborate while incorporating mobility into your iPad®
- Asset tagging area allows users to quickly identify devices reducing users losing or misplacing their devices in classroom or collaborative environments
- Easy access to all ports and buttons allows you protection that does not sacrifice the ability to continue using all cables, headphones and other accessories
- Easy to install screen protector provides protection no matter where you go and what you do



| | | | |
|--------|----------|-------|---------|
| K97703 | KMW97703 | Black | \$68.95 |
|--------|----------|-------|---------|



ACCO Brands
Four Corporate Drive
Lake Zurich, IL 60047-8997
In USA call 800.541.0094
www.accobrand.com

Kensington®, Swingline® and ACCO® names and designs are registered trademarks of ACCO Brands. GBC® and Quartet® names and designs are registered trademarks of General Binding Corporation. Fusion® is a trademark of ACCO Brands. X® Design, Xyron® and Create-A-Sticker® are registered trademarks of Esselte LLC. All other brands or product names are trademarks or registered trademarks of their respective holders. Minimum order quantities may apply. Colors are subject to change.

©2017 ACCO Brands. All Rights Reserved.

15579E001